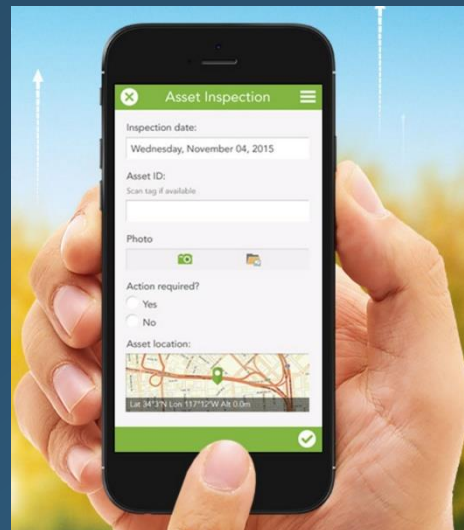
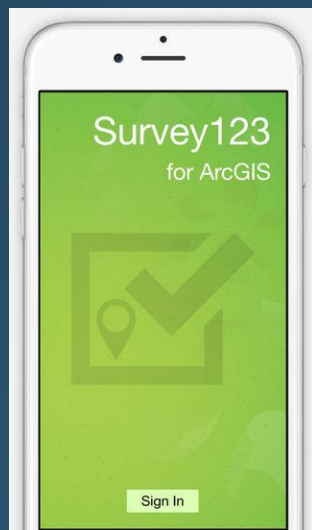




Field Data Collection Training

Collecting data in the field using smart phones:
Survey 123 for ArcGIS

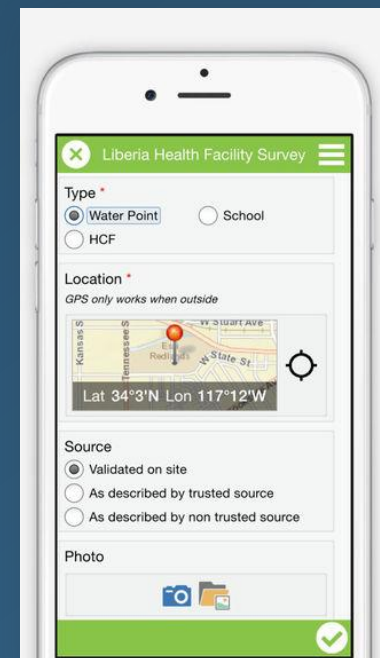




What is Survey123?



- Smart phone app: Windows, Android, iOS
- Access: ArcGIS Online Account
- Form-based – surveys created in spreadsheets
- For capturing new data
- Collects points



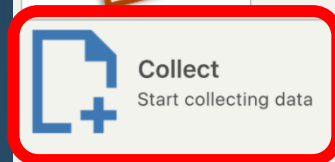
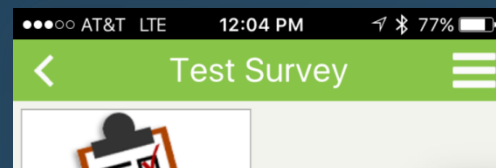
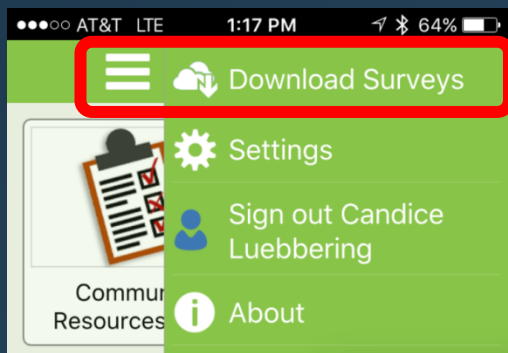


Test Survey on the App

- Let's try it out!
 - Open the Survey123 app on your phone
 - Log in using your ArcGIS Online account
 - Click 'Get Surveys' or choose 'Download Surveys' from the menu at the top right
 - Download the '**Test Survey**'



Test Survey on the App



What is your first name?

Are you a student, professor, or other professional?

☐ Student

☐ Professor

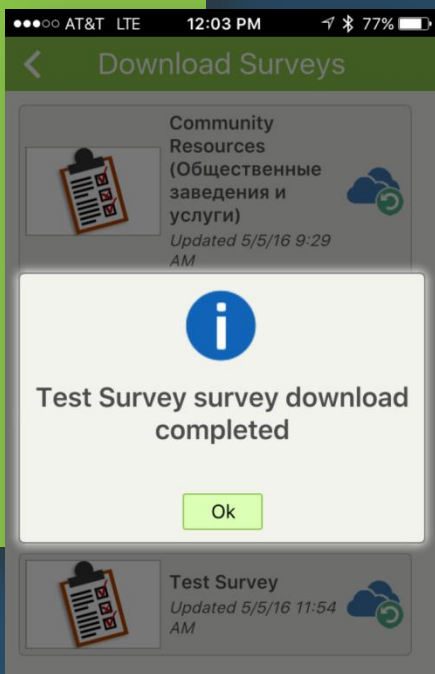
☐ Other Professional

What university or organization are you affiliated with?

Where do you work or go to school?

Use the map below to choose the location.

45°31'N 122°39'W ± 65 m





Test Survey on the App

Tap on the map to open it full screen to set your point.

Tap the green checkmark to save your location and your survey

My Survey

What is your first name?

Are you a student, professor, or other professional?

☐ Student

☐ Professor

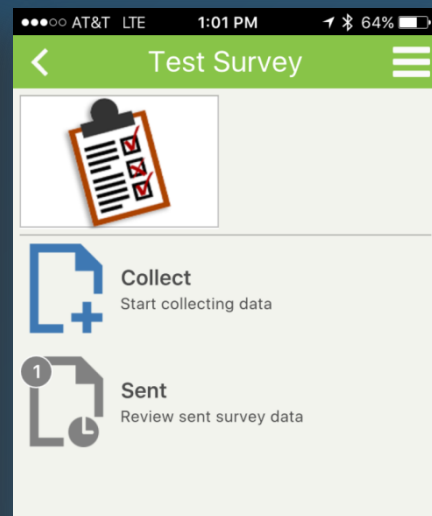
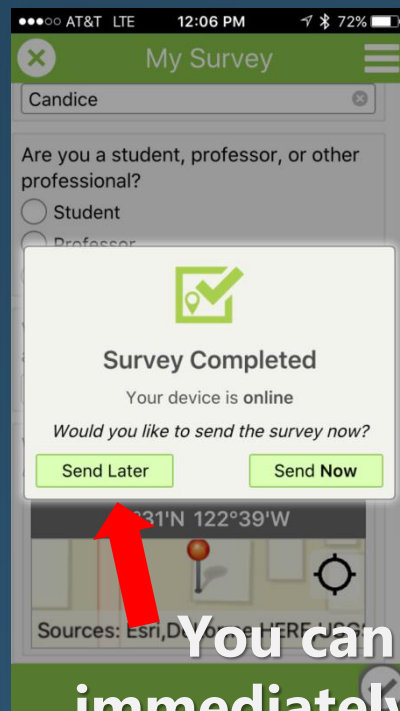
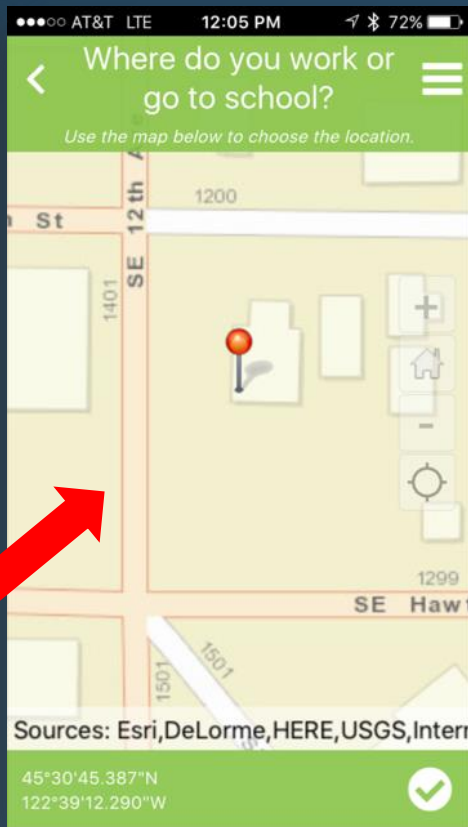
☐ Other Professional

What university or organization are you affiliated with?

Where do you work or go to school?

Use the map below to choose the location.

45°31'N 122°39'W ± 65 m



You can send data immediately or later once you are back on wifi



Where does survey data go?



Gallery

My Favorites My Organization's Featured Content Esri Featured Content

Kharkiv Featured Content

Sort By: Most Viewed



Show

All

Maps
Layers
Scenes
Apps
Tools
Files

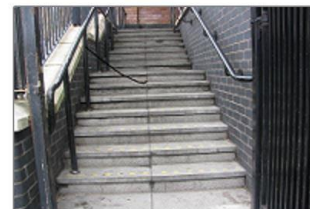
Search the website or visit the
ArcGIS Marketplace



Community Resources
(Общественные)



spaero_kharkiv_lakes_w
aterbodies



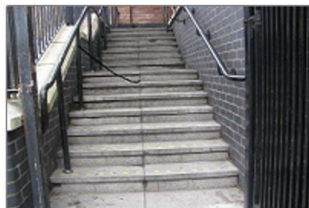
Mobility Features
(Доступность среды)



Community Resources
(Общественные)



spaero_kharkiv_building
s_subset



Mobility Features
(Доступность среды)



spaero_kharkiv_elevatio
n_contours



Test Survey



Where does survey data go?



Details Add Edit Basemap Analysis Save Share Directions Measure Bookmarks Find address or place

Contents

- Test Survey
- Topographic

Test_Survey

What is your first name?	Candice
Are you a student, professor, or other professional?	Other Professional
What university or organization are you affiliated with?	American Association of Geographers

Edited by LuebberingAAG 53 minutes ago

Zoom to Get Directions Edit

Esri.com · ArcGIS Marketplace · Help · Terms of Use · Privacy · Contact Esri · Contact Us · Report

MRLC, Oregon Metro, Bureau of Land Management, State of Oregon, State of Oregon ...




How was the survey made?

- <https://survey123.arcgis.com>
- Use Survey123 Connect – free download


Create a New Survey Using ..

Survey123 Connect



A downloadable desktop tool to help you author powerful Surveys with XLSForms.

Quick Designer



Coming Soon

Build Surveys in a snap right from your browser



How was the survey made?

Test Survey

Survey123ConnectBeta

Form Preview Schema Preview Settings

My Survey

What is your first name?

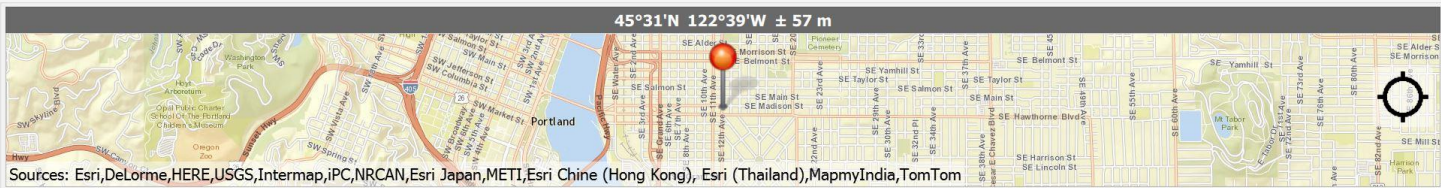
Are you a student, professor, or other professional?

- ☐ Student
- ☐ Professor
- ☐ Other Professional

What university or organization are you affiliated with?

Where do you work or go to school?

Use the map below to choose the location.



Show Data Values

Show Feature Object

Show Instance Name

Validate Input

Load time on windows
1.3 seconds





How was the survey made?



Test Survey.xlsx - Microsoft Excel

File Home Insert Page Layout Formulas Data Review View Add-Ins JMP Design

Clipboard Font Alignment Number Styles Cells Editing

	A	B	C	D	E	F
	type	name	label	hint	constraint	constraint_message
1	text	name	What is your first name?			
2	select_one role	role	Are you a student, professor, or other professional?			
3						
4	text	affiliation	What university or organization are you affiliated with?			
5	geopoint	location	Where do you work or go to school?	Use the map below to choose the location.		
6						
7						
8						
9						
10						
11						
12						
13						
14						
15						
16						
17						
18						

survey choices settings

Ready

100%



How was the survey made?

Test Survey.xlsx - Microsoft Excel

FileHomeInsertPage LayoutFormulasDataReviewViewAdd-InsJMP

CutCopyFormat Painter

Paste

Clipboard

Arial10

B*I*U

Font

Wrap Text

Merge & Center

Alignment

General

\$% ,.00.00

Number

Conditional Formatting

Format as Table

Cell Styles

Styles

C14

	A	B	C	D	E	F	G
1	list_name	name	label	image	label::language1		
2	yes_no	yes	Yes				
3	yes_no	no	No				
4							
5	rating		1 1 Star				
6	rating		2 2 Stars				
7	rating		3 3 Stars				
8	rating		4 4 Stars				
9	rating		5 5 Stars				
10							
11	role	Student	Student				
12	role	Professor	Professor				
13	role	Other_professional	Other Professional				
14							
15							
16							
17							
18							
19							
20							



Sharing your Survey

In Survey123 Connect, click to upload your survey to AGOL.

Log in to
<https://survey123.arcgis.com>
Find your survey, click the share button below it.



Survey Construction Resources



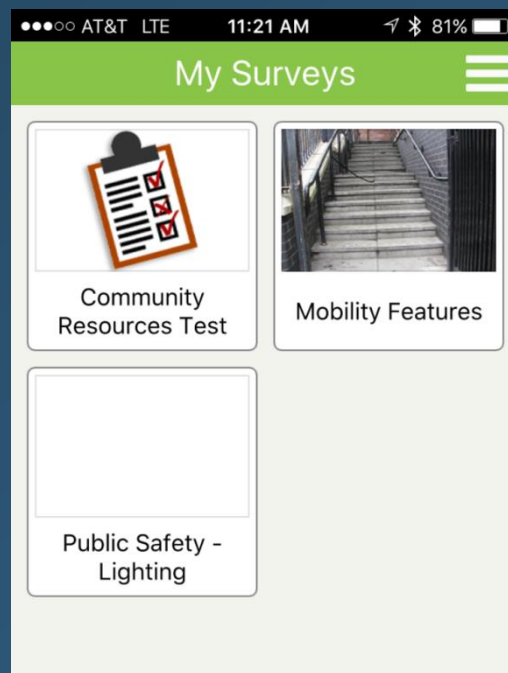
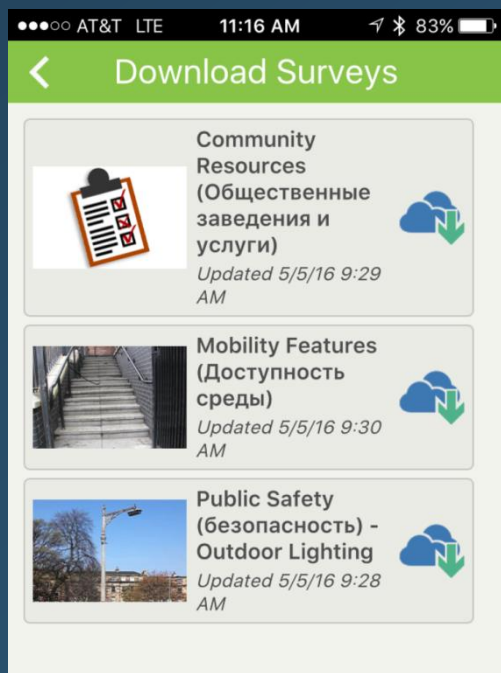
- **Survey123 for ArcGIS Getting Started Video (14 minutes):**
<https://www.youtube.com/watch?v=0gGQbCuPRQI&list=PL2hNiZRjxo9O510LUg4RCcH3rucrQge0&index=1>
- **Website resource for learning about the fields in customized forms and the variety of ways you can set up surveys in Survey123 Connect:**
<http://survey123.esri.com/resources/XLSFormSupport/>
- **Survey123 Community on GeoNet:**
<https://geonet.esri.com/groups/survey123>





Workshop Surveys

- Download the 3 Surveys for this week
 - 1) Mobility Features
 - 2) Public Safety
 - 3) Community Resources





Workshop Surveys



Mobility Features

AT&T LTE 2:43 PM 61%

My Survey

Is this a street intersection, stairs, or subway station entrance? *

☐ Street Intersection

☐ Stairs

☐ Subway Station Entrance

Collect the GPS coordinates for this feature. *



Use the map below to set the feature location.


45°31'N 122°39'W ± 1061.52 m

© OpenStreetMap contributors

Take a photo of this mobility feature.

This is optional.



Public Safety

AT&T Wi-Fi 11:06 PM 78%

My Survey

Is this a street light/lamp or evacuation gathering place? *

☐ Street light or lamp

☐ Evacuation gathering place

Capture the location of this feature using the map below. *



Tap on the map to open it, zoom in and move the map as needed.


50°0'N 36°14'E ± 65 m

© OpenStreetMap contributors

Take a photo of this feature.

This is optional.



Community Resources

AT&T LTE 2:43 PM 61%

My Survey

What type of community resource is at this location? *

Social Service or General Community Service includes: pension fund branches, government offices, banks, food markets, and post offices.

☐ Healthcare Facility

☐ Housing Resources

☐ Childcare Resource

☐ Employment Resource

☐ Social Service or General Community Service

Collect the GPS coordinates for this feature. *

Use the map below to set the location.

45°31'N 122°39'W ± 1414 m

© OpenStreetMap contributors

Sources: Esri, DeLorme, HERE, USGS

